

Foxhall



Estate Agents

625 Foxhall Road
Ipswich IP3 8ND

Unit 4, Ropes Drive
Kesgrave IP5 2FU

01473 721133

01473 613296

info@foxhallestateagents.co.uk

www.foxhallestateagents.co.uk



Nock Gardens

Kesgrave, Ipswich, IP5 2DU

Asking price £380,000



3



2



2



Nock Gardens

Kesgrave, Ipswich, IP5 2DU

Asking price £380,000



Front Garden

Decorative stones to the front with shrubs and a personal sweeping driveway to the side providing off-road parking for two vehicles with a further area to the side of the driveway with a nice selection of shrubs, garden shed and gated side access leading to the rear garden.

Entrance Hallway

Entrance door to entrance hall, radiator, coved ceiling, laminated style flooring and doors to.

Cloakroom

W.C., wash basin, radiator and extractor fan.

Lounge

16'10" x 9'3" (5.13m x 2.82m)

Double glazed window to front, laminated style flooring, radiator, electric fire and double glazed patio doors to the rear.

Dining Room

8'9" x 8'5" (2.67m x 2.57m)

Double glazed window to front, radiator, tiled flooring and through to the kitchen.

Kitchen

8'8" x 7'10" (2.64m x 2.39m)

Comprising single bowl sink with a mixer tap, roll-top worksurface with drawers cupboards and appliance space under, wall mounted cupboards over, oven, hob and extractor (not tested), cupboard housing boiler and double glazed window to rear.

Landing

Obscure double glazed window to rear, access to the loft, built-in airing cupboard housing the water tank and doors to all bedrooms and the bathroom.

Bedroom One

11'4" x 9'1" (3.45m x 2.77m)

Double glazed window to front, radiator, built-in wardrobe and door to the en-suite shower room.

En-Suite Shower Room

9'0" x 3'2" (2.74m x 0.97m)

Shower cubicle with shower over, pedestal wash hand basin with a mixer tap, low level W.C. porcelain style tile flooring, radiator, shaver point and obscure double glazed window to the side.

Bedroom Two

9'11" x 9'2" (3.02m x 2.79m)

Double glazed window to front and a radiator.

Bedroom Three

9'6" x 6'8" (2.90m x 2.03m)

Double glazed window to side and a radiator.

Family Bathroom

6'10" x 6'6" (2.08m x 1.98m)

Panel bath with a mixer tap, shower attachment over and screen, low level W.C., pedestal wash hand basin with a mixer tap, radiator, shaver point, tiled floor and obscure double glazed window to front.

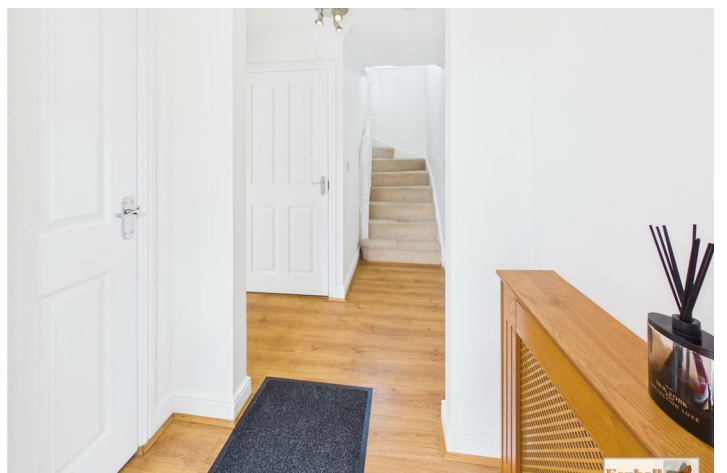
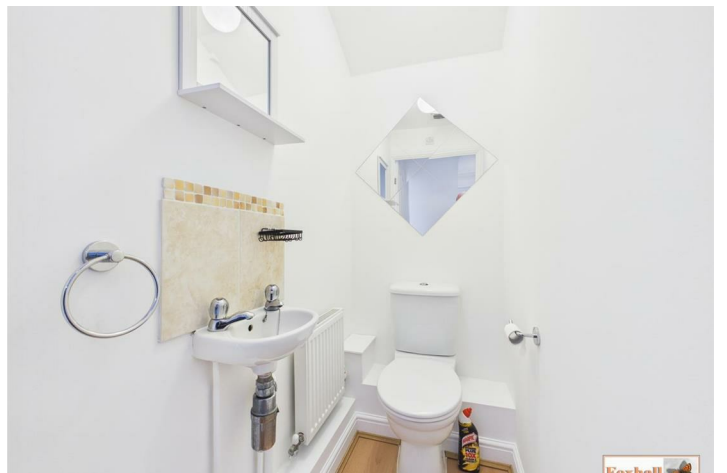
Rear Garden

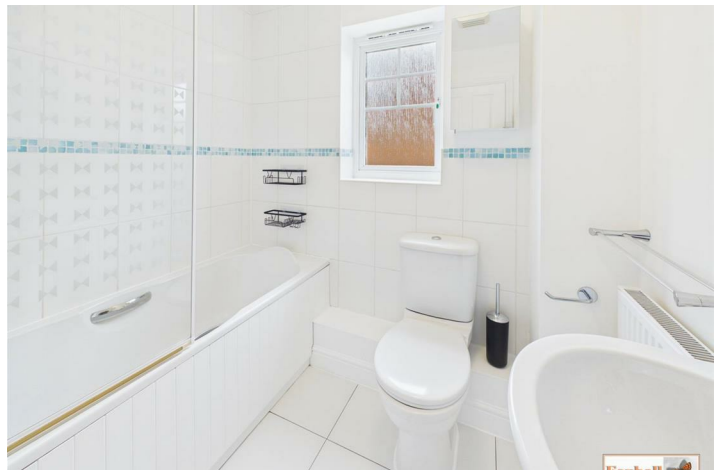
Enclosed by timber fencing with patio and neat lawned area.

Agents Notes

Tenure - Freehold

Council Tax Band - D







Road Map



Hybrid Map



Terrain Map



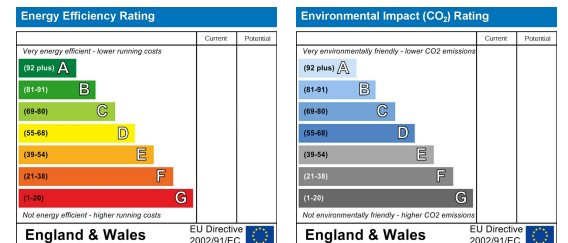
Floor Plan



Viewing

Please contact us on 01473 721133 if you wish to arrange a viewing appointment for this property or require further information.

Energy Efficiency Graph



These particulars, whilst believed to be accurate are set out as a general outline only for guidance and do not constitute any part of an offer or contract. Intending purchasers should not rely on them as statements of representation of fact, but must satisfy themselves by inspection or otherwise as to their accuracy. No person in this firm's employment has the authority to make or give any representation or warranty in respect of the property.